

LABORATORY MANAGEMENT TESTING SOFTWARE **LYNX Pro**

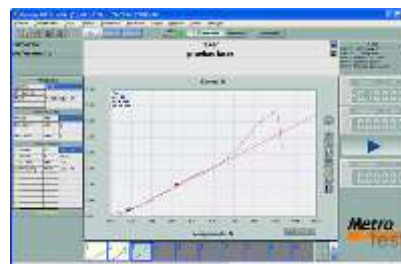
SIMULTANEOUS TESTS - Multi System (Client / Server)

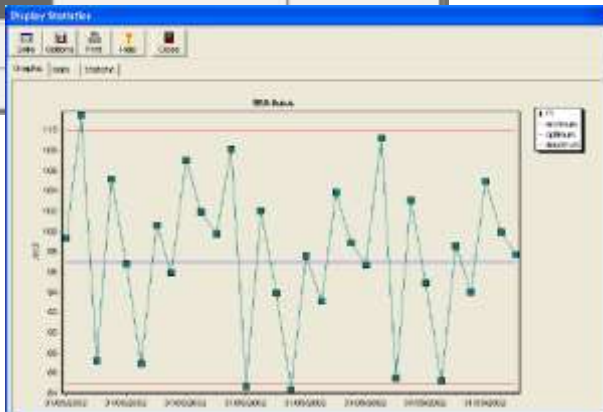
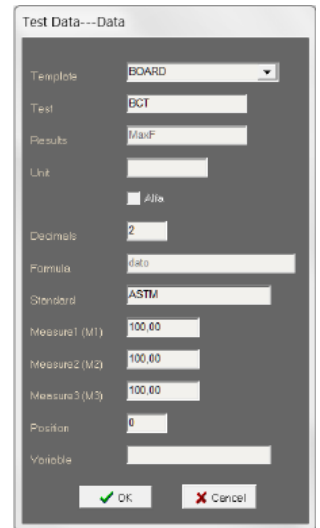
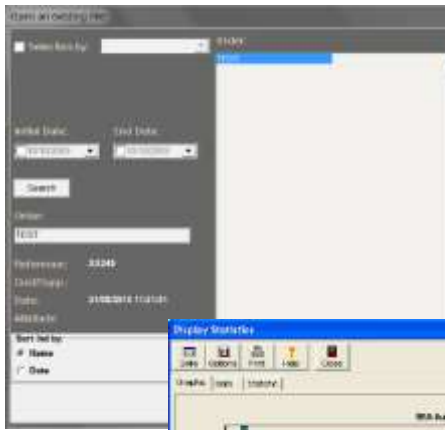
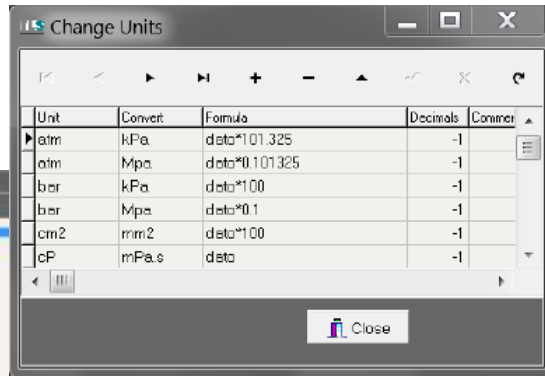
Software for data acquisition from a test instrument through a direct cable or network connection and afterwards Integral Data Management. With complete statistics (Chart Bar, Gaussian bells, Tendencies, SPC ...)



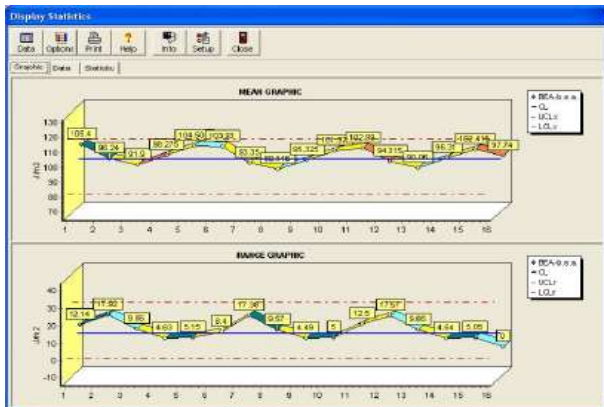
Optional tests Modules of 1 or 2 parameters of measurement, to display the data in each equipment connected to **LYNX** system.

- Operating mode **SIMULTANEOUS**
- Multiuser system (unlimited users)
- With Database Client/Server type
- ERP Systems Connectivity (Optional module)
- Remote access to information by **INTRANET** with optional Viewers

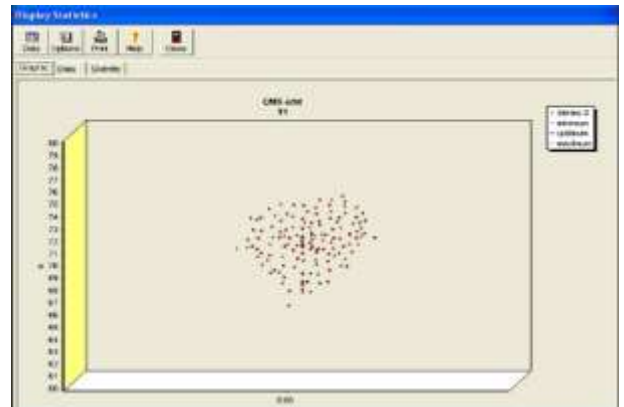




Gráfica de Tendencia



SPC (Control Estadístico del Proceso)



Gráfica de Dispersión



ADVANTAGES

- FAST** obtaining of data
- RESULTS MANAGEMENT WITHOUT HUMAN ERROR**
- EASY** to manage
- TRACEABILITY ISO 9000**
- Other DATABASE COMPATIBILITY:** ORACLE – SQL Server ...
- OPTIMIZING OF HUMAN RESOURCES**
- SIMULTANEOUS TESTS** with unlimited test equipment (Test modules to be chosen)

FEATURES

- MODULAR STRUCTURE**
- OPEN AND CONFIGURABLE**
- Possibility to combine work modes for Testing (**SEQUENTIAL** and **SIMULTANEOUS**)
- REMOTE MANAGEMENT** in **LOCAL AREA NETWORK (LAN-INTRANET)**
- STATISTICS** in **Real Time**
- MULTILINGUAL**

- ✓ **Open and Configurable** by the user: parameters, calculations, tolerances (minimum, maximum and optimum), and dimensions of samples, report language...
- ✓ **Can be operated:**
 - **MANUAL**, data input by keyboard.
 - **AUTOMATIC**, in **ON LINE**, direct connection to equipment with the optional modules (to be chosen).
- ✓ **Different measuring & test work areas** (Raw materials, finished products, processes of production, effluents treatment, emission of gases...)
- ✓ **Configurable quality reports**, with selectable test grouping.
- ✓ **O.S. recommended:** Windows* 8 and 10
- ✓ **Operative in NETS** "TCP-IP" (NT- UNIX - NOVELL...)
- ✓ **Conversions of international measuring units**
- ✓ **Database Integration of the results related to** Customers, Suppliers, equipment, material, batch etc.
- ✓ **Results Management in Real Time** on: - Quality reports – Statistic controls – Gauss Bells – Dispersal Curves Results – Test Comparatives and Tolerances – Statistic Process Control S.P.C. (Values Cp and Cpk) - Tendencias – Consulting of historic values...
- ✓ **Different access profiles**, user, controller, administrator.
- ✓ **Easy to use**, with on line help
- ✓ Customers and suppliers **testing management**

OPTIONAL:

- VIEWERS Programs**, to install in PCs of local nets, and remote management
- TELEMAINTENANCE**, by Modem/Fax
- OPERATIVE SYSTEMS**
- PCs, SERVERS, LAN, PERIPHERICS...**

* Module **LYNX-View** is a software tool that displays on screen the results of their tests obtained or introduced in the **LYNX** system as trend charts marking tolerances and controlled remotely without the people who visualize need to operate the program.

** Windows 8 and 10 are products developed by Microsoft Corporation



SOFTWARE - TECHLAB SYSTEMS	LYNX	
	Plus	Pro
Características Generales		
Multi tests equipments conexión	✓	✓
Data dimension entrance (caliper....)	✓	✓
Automatic data manual introduction/modification	✓	✓
Additional manual tests	✓	✓
Support for more than one Tester in the same	✓	✓
Multiple templates	✓	✓
Automatic Entrance of test duplicates	✓	✓
Manual Entrance of test duplicates	✓	✓
PDF Reports	✓	✓
View Support	✓	✓
Graphyc view LYNX-View Support	✓	✓
Terminal Server Support	✓	✓
Maximun numer of equipment connected	Unlimited	Unlimited
Simultaneous Tests in the same report		✓
Client / Server Architecture		✓
Client Licences included	1	2
WEB service conection to LYNS / ERP	✓	✓
Module Mercury Net support	✓	✓
Alphanumerical results Introduction via Keyboard	✓	✓
Data Base		
Data Base support	Microsoft Access	Interbase / SQL Server / ORACLE
Data Base included	Microsoft Access	Interbase
Additional clients in the data base	1	
Statistics		
ATRIBUTES Statistics	✓	✓
Gauss Bell	✓	✓
Bars Graphic	✓	✓
Tolerances	✓	✓
SPC	✓	✓
Tendence	✓	✓
Dispersal	✓	✓
Other statistics	✓	✓
Recommenede Operative System (Client side)		
Windows 8	✓	✓
Windows 10	✓	✓
Recommenede Operative System (Server side)		
Windows 2003 – 2008 - 2012 Server	✓	✓
Software languages		
Spanish	✓	✓
French	✓	✓
English	✓	✓
German	✓	✓
Users Manual		
PDF Electronic support	✓	✓