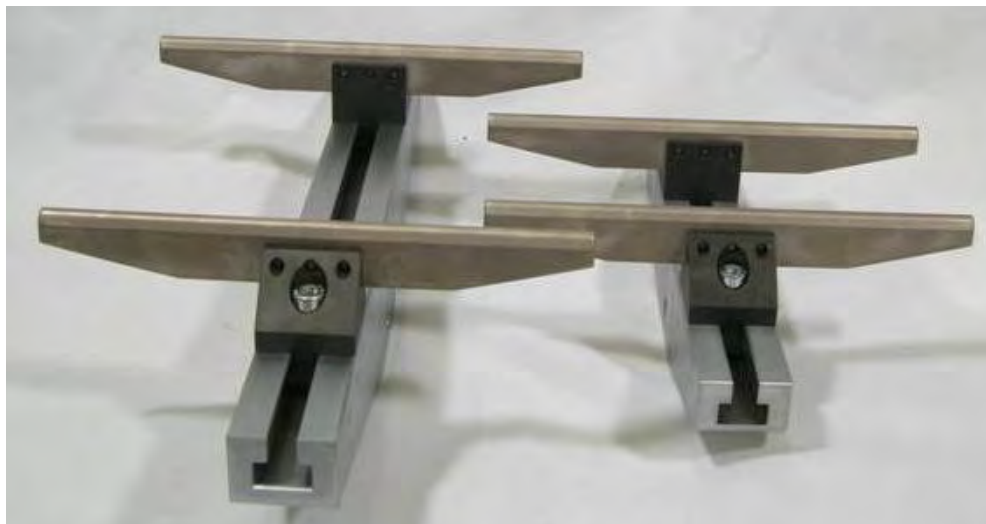


PFb



PFb/B300--4P-CWR5x170



PFb/4P-CWXD8-iTH1-AfDP10s iTH1

Camera adaptor thermal tests at different temperatures, with inductive sensor

PFb



PFb/4P-CWXD15x180

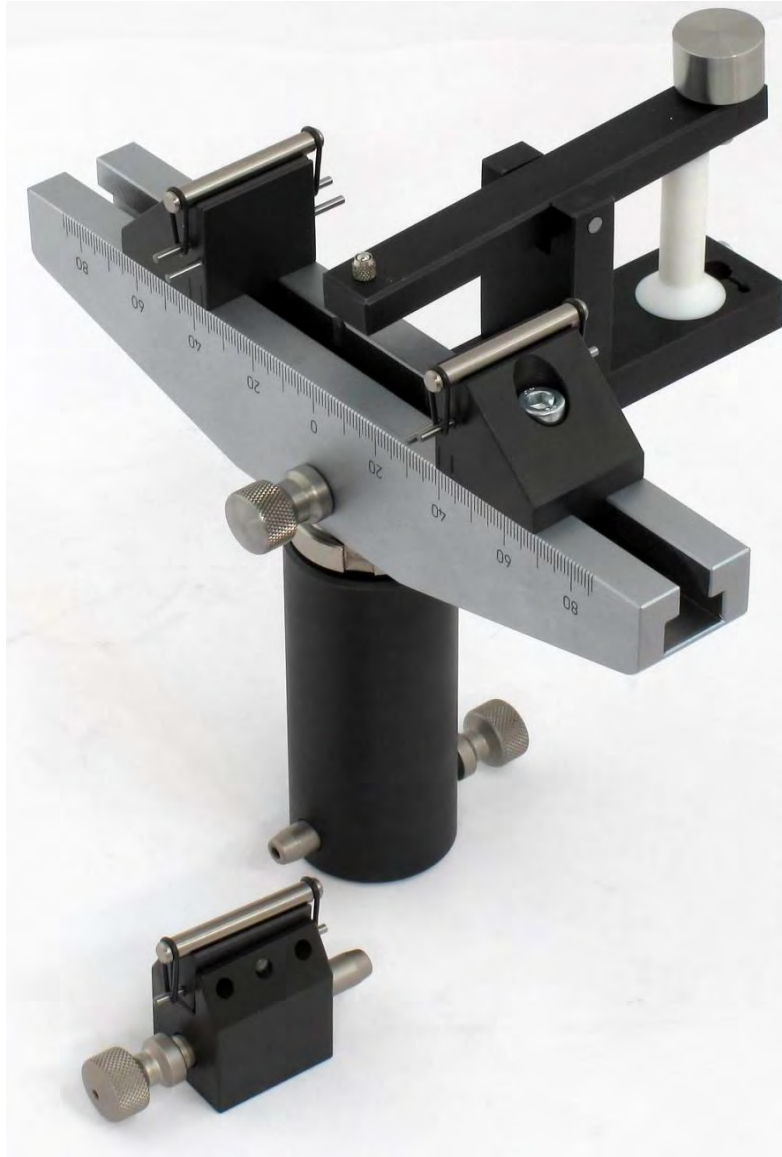


PFb/CWXD4 iTH1 Support piece for installing an internal extensometer 8mm

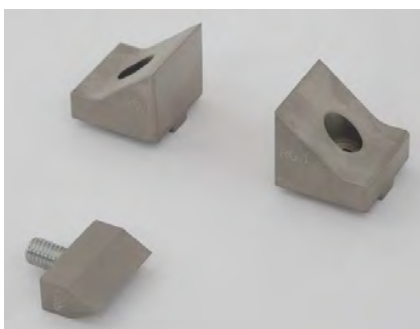
PFb

Code 2848

Adapter (with balancing) for the placement of LVDT to Flexure Bending Test Device according to ISO 178 standards...



PFb/CWXD4-iTH2 Part support for balancing, to adapt an external extensometer



PFb/CR01 Small Radio Supports 0.1mm