

# Integral Test Management Software GESLAB Plus

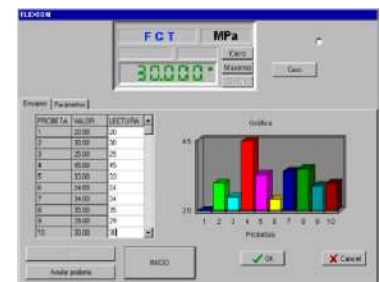
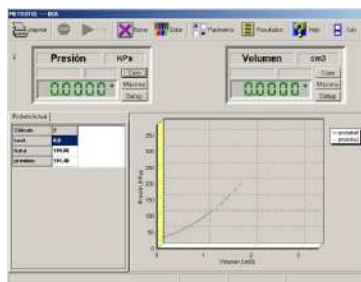
Cod.: 1134

System to automatic data acquisition test equipment and afterwards integral management. With complete statistics (Chart Bar, Gaussian bells, Tendencies, SPC ...)



Optional tests Modules of 1 or 2 parameters of measurement, to display the data in each equipment connected to GESLAB system

- ❑ **SEQUENTIAL** operative mode
- ❑ **SINGLE USER** system
- ❑ **With INTERBASE** DataBase
- ❑ **INTRANET** Remote access (Connectivity to ERP's systems)



## ADVANTAGES

- ❑ **FAST** obtaining of data
- ❑ **RESULTS MANAGEMENT WITHOUT HUMAN ERROR**
- ❑ **EASY** to manage
- ❑ **TRACEABILITY ISO 9000**
- ❑ **Other DATABASE COMPATIBILITY:** ORACLE – SQL Server ...
- ❑ **OPTIMIZING OF HUMAN RESOURCES**
- ❑ **SEQUENTIAL TESTS** with unlimited test equipment (Test modules to be chosen)

## FEATURES

- ❑ **MODULAR STRUCTURE**
- ❑ **OPEN AND CONFIGURABLE**
- ❑ **SEQUENTIAL TESTS**
- ❑ **REMOTE MANAGEMENT in LOCAL AREA NETWORK (LAN-INTRANET)**
- ❑ **STATISTICS in Real Time**
- ❑ **MULTILINGUAL**
  
- ❑ **Open and Configurable** by the user: parameters, calculations, tolerances (minimum, maximum and optimum), and dimensions of samples, report language...
- ❑ **Can be operated:**
- ❑ **MANUAL**, data input by keyboard.
- ❑ **AUTOMATIC**, in ON LINE, direct connection to equipment with the optional modules (to be chosen).
- ❑ **Different measuring & test work areas** (Raw materials, finished products, processes of production, effluents treatment, emission of gases...)
- ❑ **Configurable quality reports**, with selectable test grouping.
- ❑ **O.S. recommended:** Windows\* 2000 – XP - VISTA
- ❑ **Operative in NETS "TCP-IP"** (NT- UNIX - NOVELL...)
- ❑ **Conversions of international measuring units**
- ❑ **Database Integration of the results related to** Customers, Suppliers, equipment, material, batch etc.
- ❑ **Results Management in Real Time on:** - Quality reports – Statistic controls – Gauss Bells – Dispersal Curves Results – Test Comparatives and Tolerances – Statistic Process Control S.P.C. (Values Cp and Cpk) - Tendencies – Consulting of historic values...
- ❑ **Different access profiles**, user, controller, administrator.
- ❑ **Easy to use**, with on line help
- ❑ Customers and suppliers **testing management**

## OPTIONAL:

- ❑ **VIEWERS Programs**, to install in PCs of local nets, and remote management
- ❑ **TELEMAINTENANCE**, by Modem/Fax
- ❑ **OPERATIVE SYSTEMS**
- ❑ **PCs, SERVERS, LAN, PERIPHERICS...**

\* Windows 2000 - XP are products developed by Microsoft Corporation

SOFTWARE SUMMARY TABLE

SOFTWARE	MetroTEST	GESLAB Integral System	
		PLUS	PRO
<b>General Characteristics</b>			
Multi equipment connexion		✓	✓
Data dimension entrance (caliper....)	✓	✓	✓
Automatic data manual introduction/modification		✓	✓
Additional manual tests		✓	✓
Support for more than one testing machine		✓	✓
Multiple templates	✓	✓	✓
Automatic Entrance of test duplicates	✓	✓	✓
Manual Entrance of test duplicates		✓	✓
PDF Reports	✓	✓	✓
View Support		✓	✓
Graphyc view MetroView Support		✓	✓
MetroCal Integration		✓	✓
Terminal Server Support		✓	✓
Maximun number of equipment connected	1	UNLIMITED	UNLIMITED
Simultaneous Tests in the same report			✓
Protection key	✓	✓	✓
Client / Server Architecture			✓
Additional data Entrance position support			✓
Client Licences included	1	1	2
Automatic Management locking			✓
WEB service conection to GESLAB / ERP		✓	✓
Mercury Net support		✓	✓
Alphanumerical results Introduction		✓	✓
<b>Data Base</b>			
Data Base support	Microsoft Access	Microsoft Access	Interbase / SQL Server / ORACLE
Data Base included	Microsoft Access	Microsoft Access	Interbase
Additional clients in the data base			1
<b>Statistics</b>			
ATTRIBUTES Statistics		✓	✓
Gauss Bell	✓	✓	✓
Bars Graphic	✓	✓	✓
Tolerances	✓	✓	✓
SPC		✓	✓
Tendence		✓	✓
Dispersal		✓	✓
Other statistics		✓	✓
<b>Reccommended Operative System (Client)</b>			
Windows XP	✓	✓	✓
Windows VISTA	✓	✓	✓
<b>Reccommende Operative System (Server)</b>			
Windows 2000 Server		✓	✓
Windows 2003		✓	✓
<b>Software languages</b>			
Spanish	✓	✓	✓
French	✓	✓	✓
English	✓	✓	✓
German	✓	✓	✓
<b>Users Manual</b>			
PDF Electronic support	✓	✓	✓